

7.1.2.1. The Institution has facilities for Alternate sources of energy and energy conservation measures

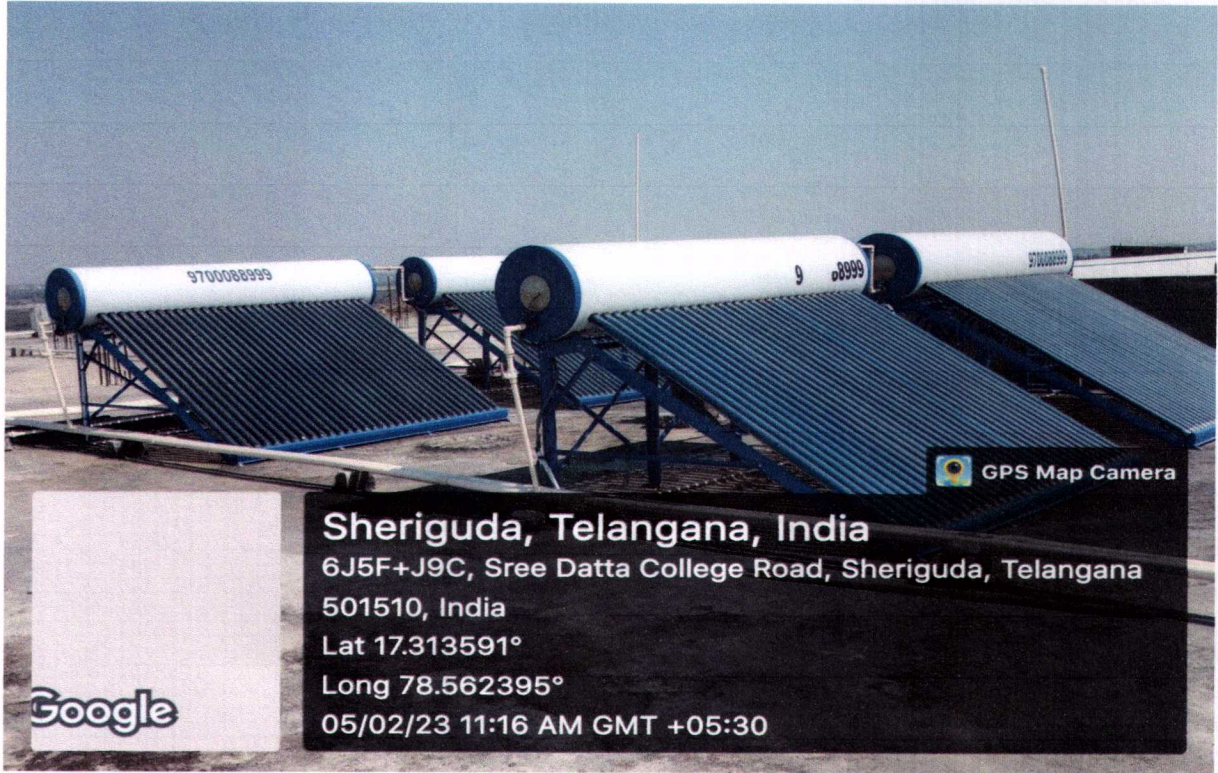
INDEX

S.No	Alternate Sources of Energy	Page Number
1	Solar Energy System	2
2	Bio Gas Plant	3
3	Diesel Generator	3
4	UPS System	4
Energy conservation measures		
5	LED Lights	5
6	High Star efficient AC with automatic control	5
7	Transparent Roofs	6
8	Day Light Utilization	6
9	LCD/LED Monitors	7



M. Jeeva
PRINCIPAL

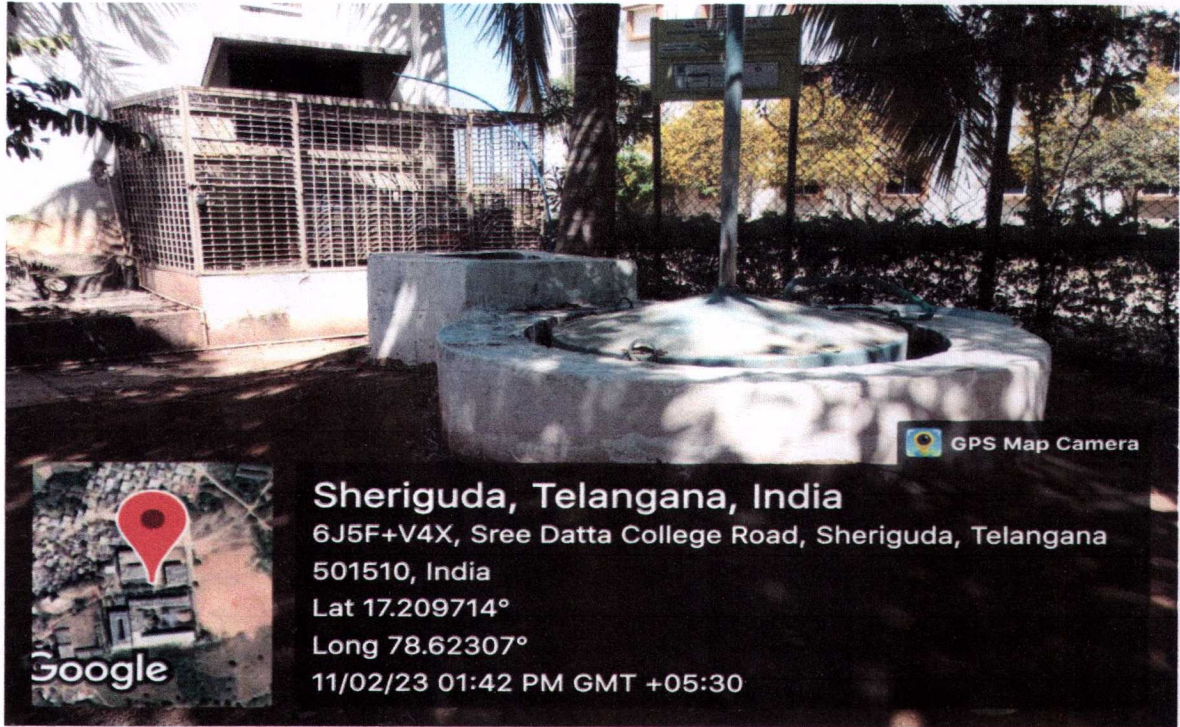
Sree Dattha Group of Institutions
Sheriguda, R.R. Dist - 501510.



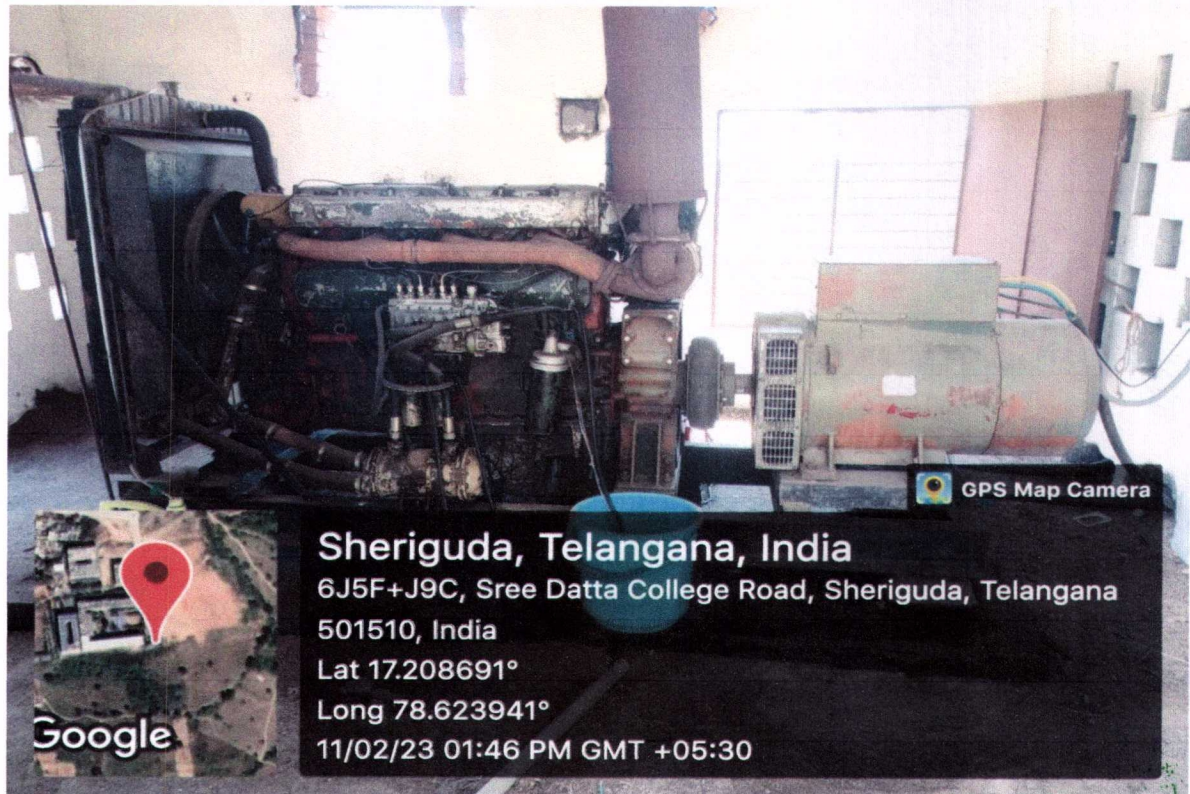
1. Solar geyser system



M. Jeeva
PRINCIPAL
Sree Datta Group of Institutions
Sheriguda, R.R. Dist. 501510,



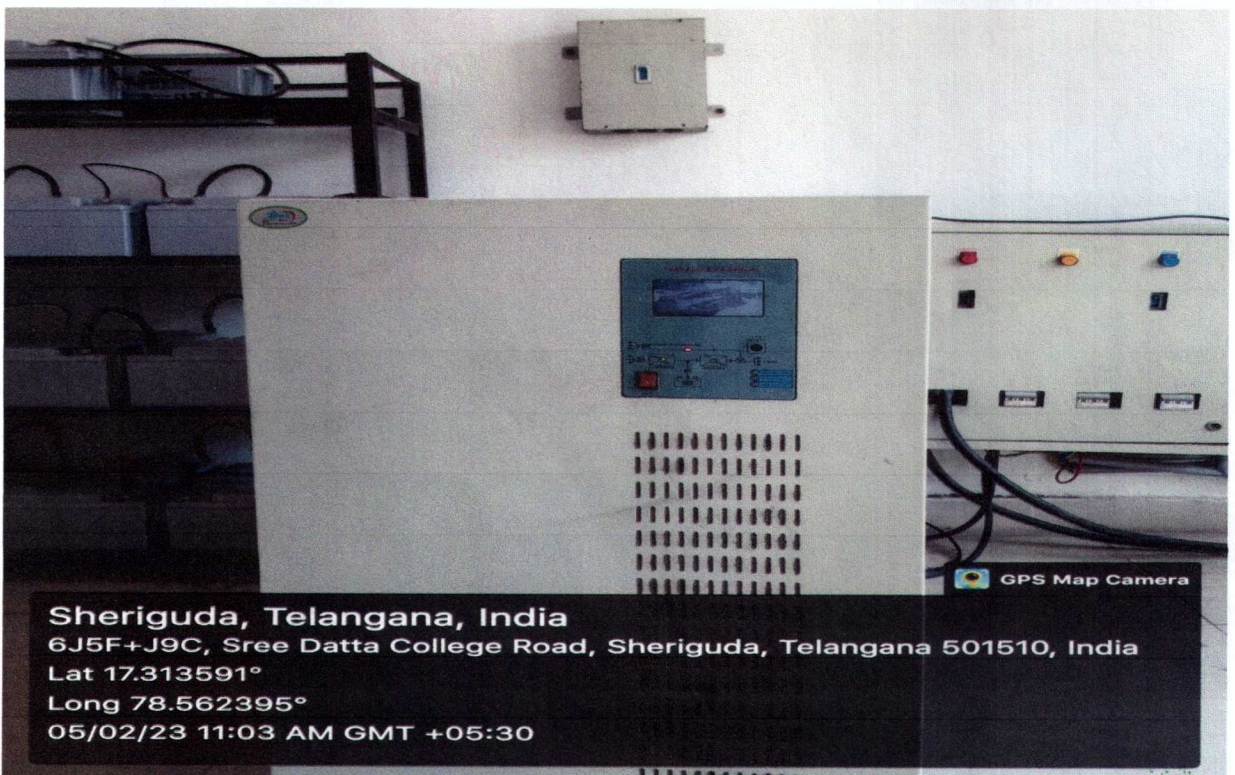
2. Bio Gas Plant at Canteen



3. Diesel Generator



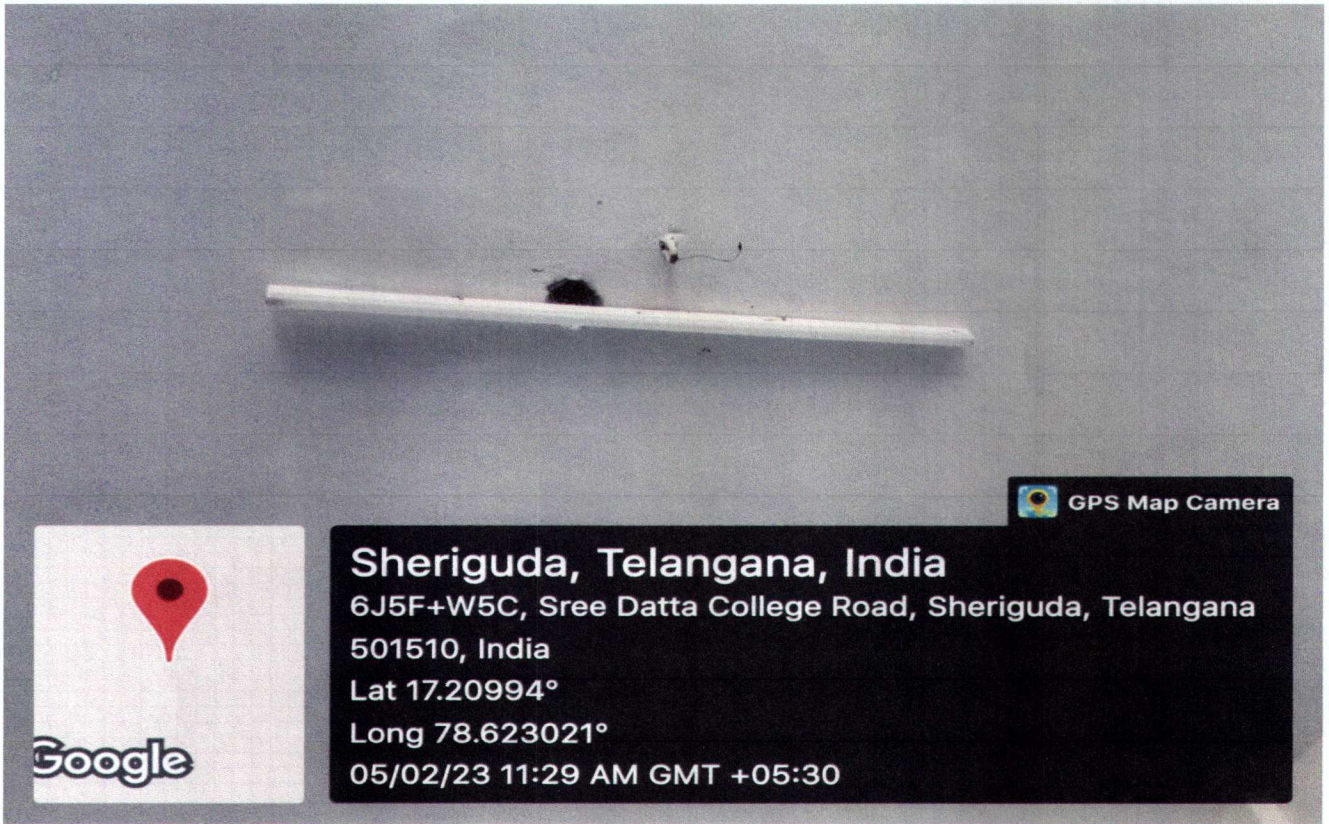
M. Jeeva
PRINCIPAL
Sree Datta Group of Institutions
Sheriguda, R.R. Dist. 501510.



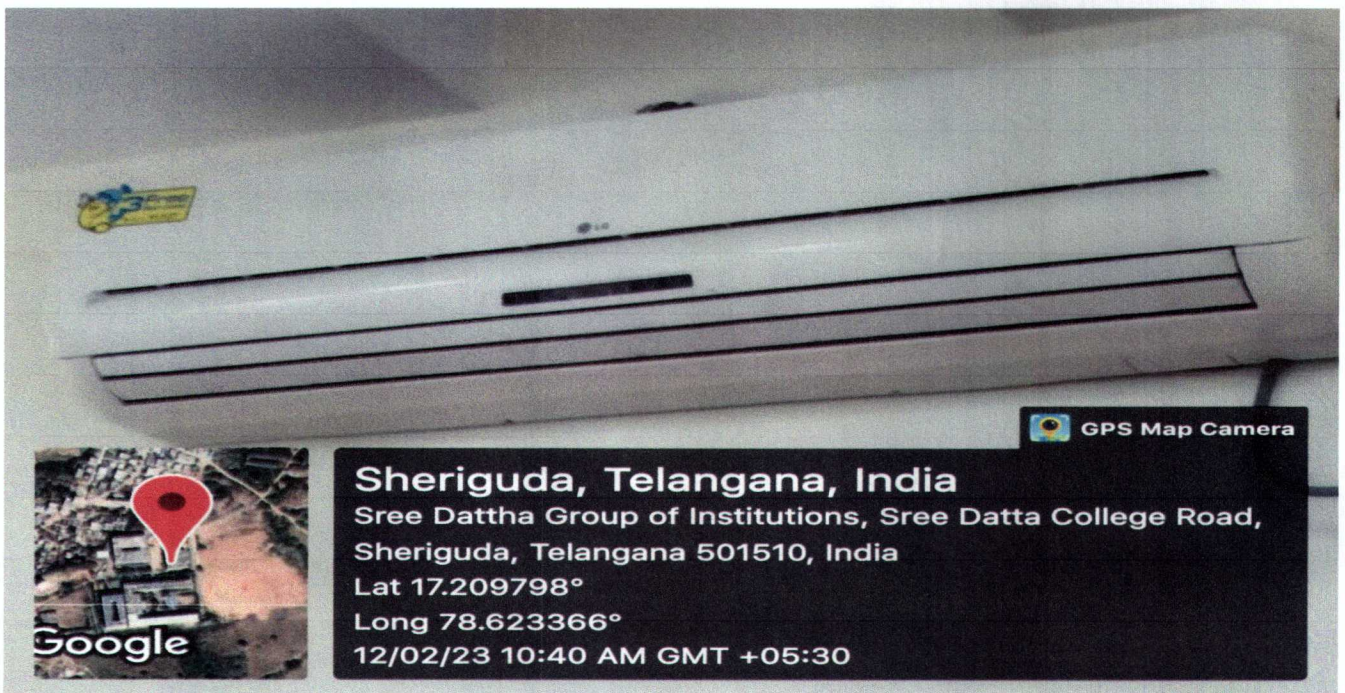
4. UPS System



M. Jeeva
PRINCIPAL
Sree Datta Group of Institutions
Sheriguda, R.D. 510.



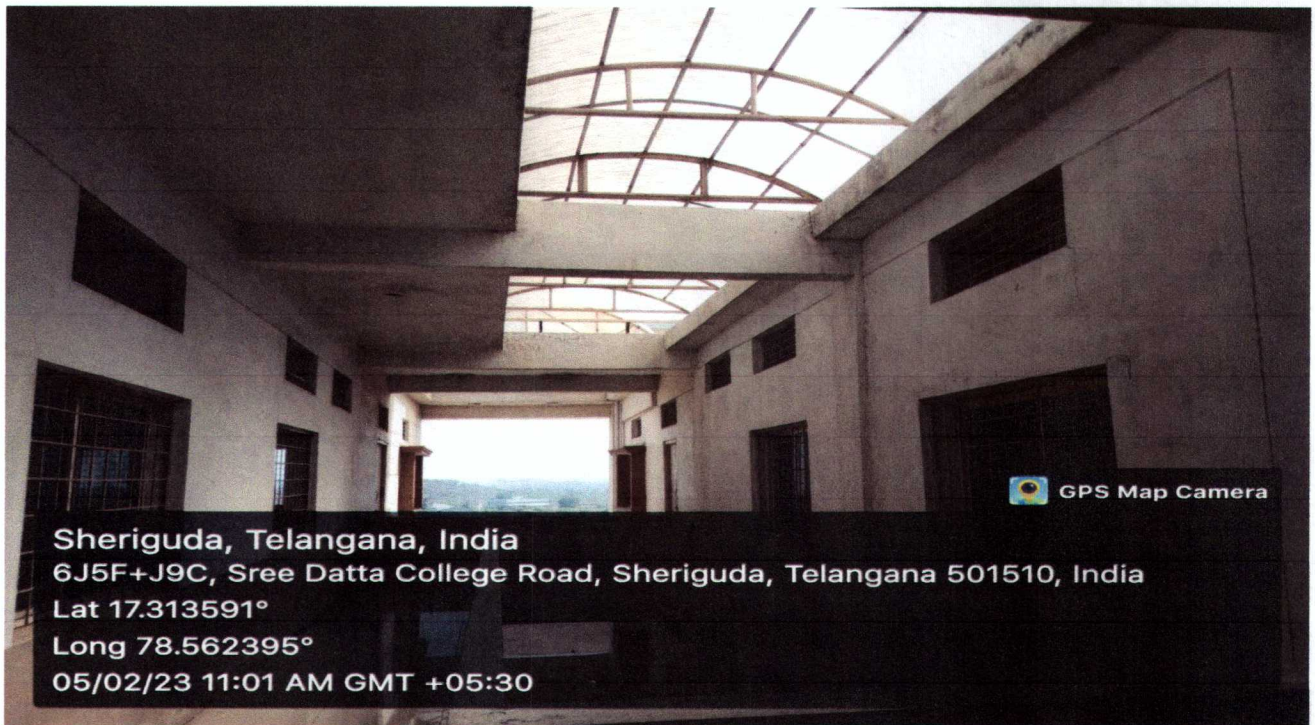
5. LED lights



6. High Star Air Conditioner

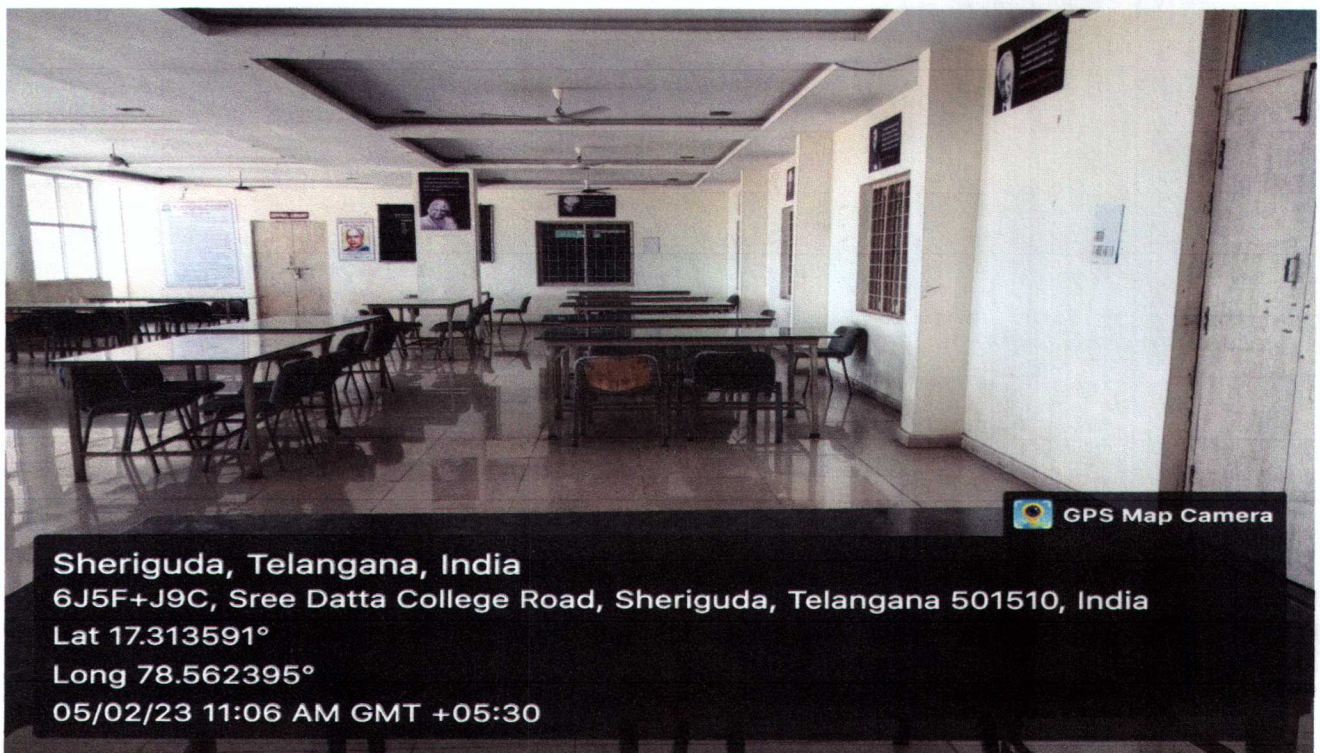


M. Jeyaraj
PRINCIPAL
Sree Datta Group of Institutions
Sheriguda, R.R. Dist - 501510.



Sheriguda, Telangana, India
6J5F+J9C, Sree Datta College Road, Sheriguda, Telangana 501510, India
Lat 17.313591°
Long 78.562395°
05/02/23 11:01 AM GMT +05:30

7. Transparent Roofs

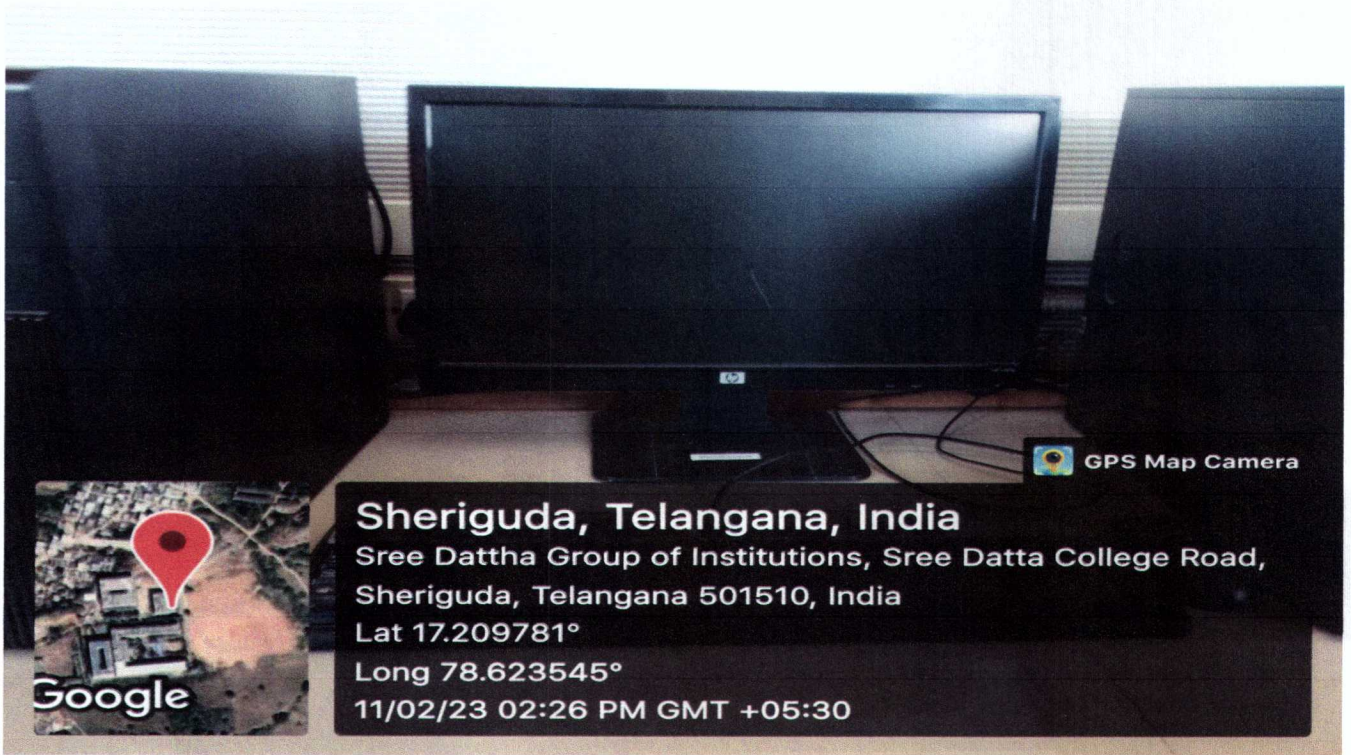


Sheriguda, Telangana, India
6J5F+J9C, Sree Datta College Road, Sheriguda, Telangana 501510, India
Lat 17.313591°
Long 78.562395°
05/02/23 11:06 AM GMT +05:30

8. Day Light Utilization



M. Jeeva
PRINCIPAL
Sree Datta Group of Institutions
Sheriguda, R.R. Dist - 501510.



9. LCD/LED Monitors



M. Jeeva

PRINCIPAL

**Sree Dattha Group of Institutions
Sheriguda, R.R. Dist - 501510.**